

OLIVIA SOFA

SKU: DOMOPA-402-Olivia Sofa



Olivia modular sofa Includes four distinct modules, this modular sofa stands out for many reasons. First, Olivia is all upholstered, including its footer, to match the upholstery of the seat and back. Also, the majority of the modules present a convex back, ergonomically perfect for tricky spaces. Being a modular sofa, Olivia allows you to configure and obtain different configurations.

A bulky, rounded, and comfortable solution for your project.

OLIVIA2MOD | END MODULE (LEFT / RIGHT SLIDED)



Dimensions:

1330 x 900 x 750 x 420 mm

52,36 x 35,43 x 29,53 in

OLIVIA MOD | CURVED CENTRAL MODULE



Dimensions:

1730 x 1020 x 750 x 420 mm

68,11 x 40,16 x 29,53 in

OLIVIA MOD | END MODULE (LEFT / RIGHT SLIDED)



Dimensions:

1800 x 990 x 750 x 420 mm

71,26 x 38,98 x 29,53 in

OLIVIA MOD | CENTRAL MODULE



Dimensions:

1030 x 900 x 750 x 420 mm

37,40 x 35,43 x 29,53 in

ZENITH NATURAL LEATHER



9000 Blanco



9001 Latte



9047 Cammello



9019 Acqua



9030 Cioccolato



9008 Topo



9023 Grafite



9009 Grigio



9024 Nero



9032 Ardesia



9021 Oceano



9018 Verdone

ZENITH NATURAL LEATHER



9022 Acclalo



9033 Cenere



9039 Champagne



9010 Avana



9012 Nocclola



9043 Nude



9037 Arancio



9038 Ananas



9042 Petunia



9016 Rosso



9041 Cipria



9026 Granata

VELLANA DOUBLE WIDTH VELVET



Composition: 100% PL

Width: 300 cm

Weight: 1230 gr/ml

Martindale: 150.000 CC

Pilling: 5

Lightfastness: > 5

FR: Treatment available in narrow with and lamination BS5852 SOURCE 0&1 + CRIB 5 + EN1021 SOURCE 1&2 + IMO8.

USE



WASHING CONDITIONS



AVAILABLE FINISHES/FABRICS

STAIN RESISTANT VELVET WITH WATER REPELLENT / P FR



01 Ivory



02 Sand



03 Beige



04 Taupe



05 Chocolate



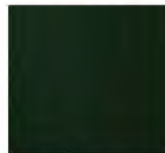
06 Curry



07 Pure Yellow



08 Golden Olive



09 Dark Green



10 Storm Blue



11 Aqua Marine



12 Capri Blue



13 Light Gray



14 Lavender



15 Ash Rose



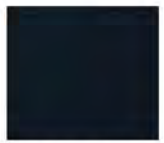
16 Deep Bordeaux



17 Rubi



18 Black



19 Navy Blue



20 Horizon Blue



21 Steel Gray



22 Dark Taupe



23 Ash Gray

Width: 140 (+/- 2cm)

Weight: 420 gr/ml

Lightfastness: 4

Pilling: 4/5

Martindale: 100,000 CC

Shrinkage: +/-2%

Obs.: FR treatment available upon request

ASTON VINYL Indoor/Outdoor



Aston 813 Linen



Aston 507 Rich Ivory



Aston 805 Cream



Aston 300 Gold



Aston 905 Dove



Aston 952 Platinum



Aston 238 Citrus



Aston 823 Chablis



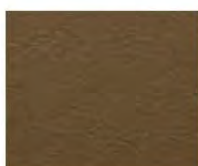
Aston 837 Stone



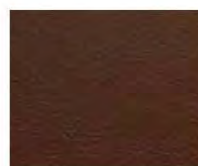
Aston 314 Mustard



Aston 801 Tan



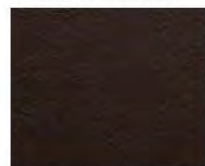
Aston 815 Buff



Aston 817 Chestnut



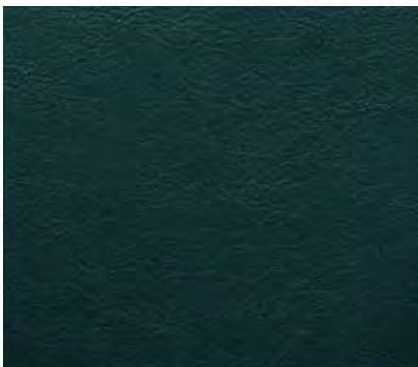
Aston 703 Mink



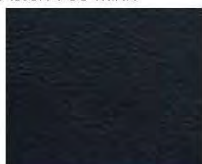
Aston 814 Espresso



Aston 807 Mushroom



Aston 203 Emerald



Aston 116 Navy



Aston 105 Indigo



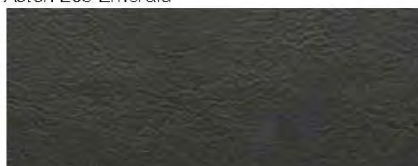
Aston 953 Gunmetal



Aston 904 Pewter



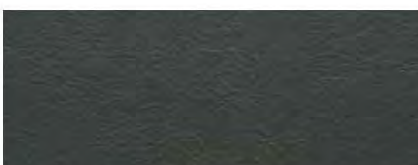
Aston 919 Zinc



Aston 954 Graphite



Aston 900 Black



Aston 906 Ash

ASTON VINYL Indoor/Outdoor



Aston 220 Light Green



Aston 204 Moss



Aston 233 Pistachio



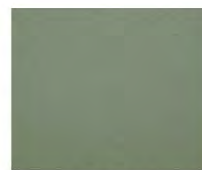
Aston 226 Lime



Aston 228 Bottle Green



Aston 506 Mist



Aston 253 Cardamom



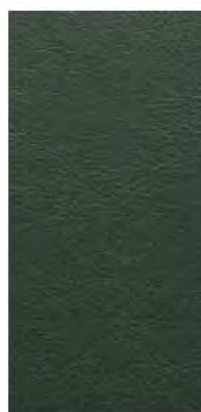
Aston 205 Sage Green



Aston 110 Pacific



Aston 219 Seafoam



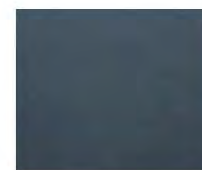
Aston 215 Elm



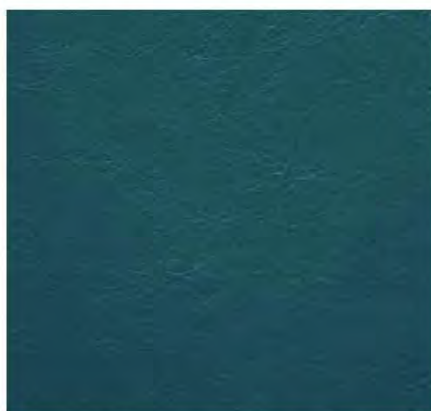
Aston 251 Eau de Nil



Aston 100 Blue



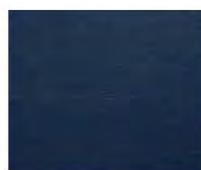
Aston 134 Sky



Aston 131 Azure



Aston 151 Teal



Aston 192 Ink



Aston 108 Delph



Aston 613 Pale Pink



Aston 414 Wine



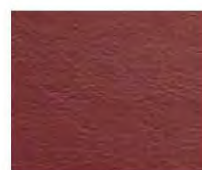
Aston 412 Purple



Aston 213 Aubergine



Aston 409 Magenta



Aston 414 Wine

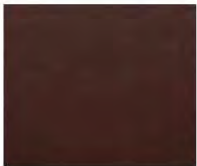
ASTON VINYL Indoor/Outdoor



Aston 618 Blush



Aston 400 Red



Aston 700 Brown



Aston 401 Amber



Aston 444 Cherry



Aston 407 Burgundy



Aston 408 Terracotta



Aston 877 Oyster



Upholstery



Flame Retardant



Abrasion



Waterproof



Outdoor
& Indoor



Anti-Microbial



Stain Resistant



Phthalate Free



Heavy Metals
Free

BROOKLAND VINYL Indoor/Outdoor



801 Tan



744 Saddle



823 Chablis



444 Cherry



400 Red



803 Mahogany



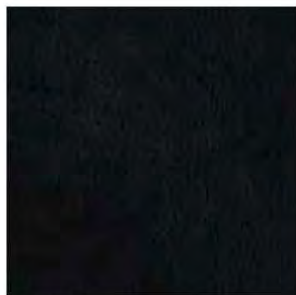
624 Mulberry



407 Burgundy



814 Espresso



900 Black



904 Pewter



911 Steel



825 Putty



805 Cream



005 Chalk



252 Willow

BROOKLAND VINYL Indoor/Outdoor



209 Wasabi



229 Forest



501 Smoke



807 Mushroom



802 Hide Green



129 Ocean



108 Delph



116 Navy

Upholstery

Flame Retardant

750,000
MARTINDALE
RUBS
Abrasion

20
MTS
Waterproof

OUTDOOR
INDOOR
Outdoor
& Indoor

Anti-Microbial

Stain Resistant

Phthalate Free

Heavy Metals
Free